

# Asi Keyi Natural Environment Park

## PARK MANAGEMENT PLANNING PROCESS



The Asi Keyi Steering Committee has developed a vision statement for the park and a set of guiding principles. The vision respects the objectives set out for the park, and Asi Keyi Natural Environment Park will be managed according to the guiding principles. These principles will guide management and decision-making in achieving the objectives of the plan. It is important that First Nations and members of the public have input on the vision and guiding principles. As such, the Steering Committee will be conducting consultations to gain feedback.

The Steering Committee would like you to review the vision statement and guiding principles presented in this newsletter and provide them with your feedback. The Steering Committee will review all the feedback and amend the vision and guiding principles as appropriate. Feedback provided on management concerns and park area use will be incorporated into the next phase of planning.

## The Vision

Asi Keyi (“my grandfather’s country”) is the homeland to past, present and future generations of people, plants and animals. The footprints of our grandparents are on the land and it is still a place to explore and connect with the natural and cultural landscape. The natural environment and the cultural and heritage values should remain unimpaired by human activities while continuing to change and evolve naturally.



## The Guiding Principles

### Homeland/Collaborative Management

- The Parties will strive to work together and use innovative management approaches to respect and care for our grandfather’s homeland for our children’s children.

### Protection of Park Values

- It is the responsibility of park managers, visitors and users to ensure the long-term protection of the natural beauty of the park as well as the ecological, archeological, historical and cultural values. Fostering public awareness, appreciation and enjoyment of the natural, cultural and historical resources of the park will enable all people to respect Asi Keyi.

### Adapting to Change

- The Parties recognize and accept that the land is always evolving and changing. Human activities within the park will be managed to reduce human caused changes to ensure that the ecological integrity of the park is maintained. Significant changes will be monitored and documented as practicable (e.g., the evolution of the Klutlan Glacier and the associated glacier forest).

### Three ways of Knowing

- Three ways of knowing allows us to expand our understanding and our caring for this land. Traditional, local, and scientific knowledge will be the fundamental tools used to make informed management decisions.

*Above: Kluane First Nation Elder Lena Johnson speaks with Jean Langlois (Government of Yukon) during the June 2015 trip with Elders to the park.*





## Guiding Principles, continued

### Regional Integration

- The park will be managed in a consistent manner with the surrounding protected areas to the greatest extent practicable. Yukon Parks will work with the neighbouring governments, mandated boards, and councils when developing management actions to ensure effective transboundary management.

### Economic Benefits and Opportunities

- Asi Keyi Park provides economic benefits and opportunities. Park management supports First Nation people to participate in these benefits and opportunities.



## The Steering Committee wants to hear from you

You can provide your feedback on the vision statement and guiding principle in two ways.

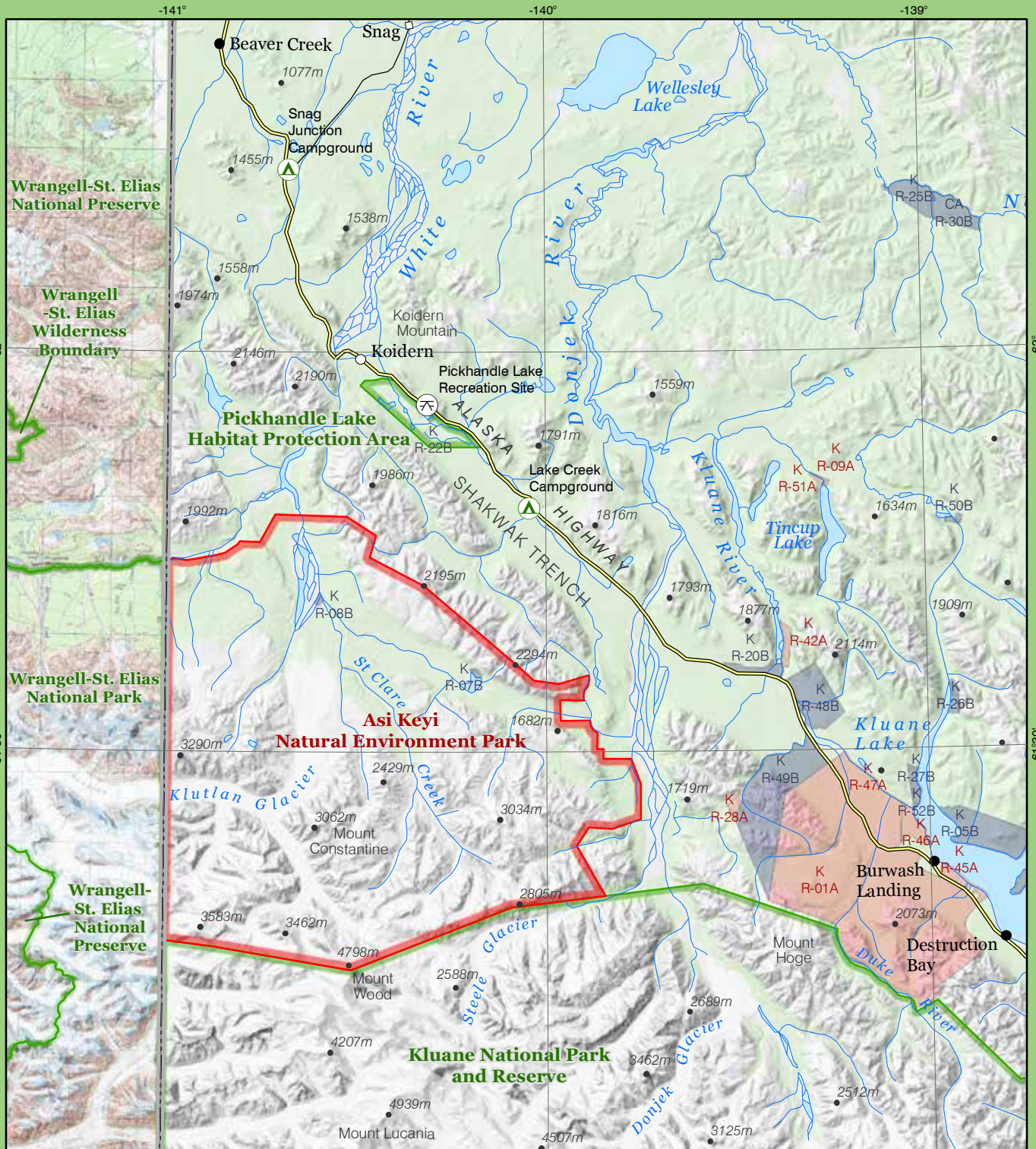
1. To fill in an electronic questionnaire please visit the Consultations page at [www.asikeyipark.ca](http://www.asikeyipark.ca)
2. If you prefer to write out your feedback please fill in the questionnaire insert in this newsletter and submit it using one of the three methods identified at the end of the questionnaire

**All feedback must be provided by May 15, 2016.**



*Kluane First Nation Elders Grace Margaret Johnson, Bertha Doris and Mary Jane Johnson during the June 2015 trip with Elders to the park.*

All photos: Government of Yukon



# ASI KEYI NATURAL ENVIRONMENT PARK

## Yukon



Scale 1:800,000

- |                                                                                     |                                 |                                                                                       |                                         |
|-------------------------------------------------------------------------------------|---------------------------------|---------------------------------------------------------------------------------------|-----------------------------------------|
|  | Park Boundary                   |  | Forest Cover                            |
|  | Other Protected Area Boundaries |  | First Nation Settlement Land Category A |
|  | Highway                         |  | First Nation Settlement Land Category B |
|  | Campground                      |                                                                                       |                                         |
|  | Recreation Site                 |                                                                                       |                                         |
|  | Elevation (metres)              |                                                                                       |                                         |